

AM M-series : M6088D/M, Master M6088D/S, Slave

Features

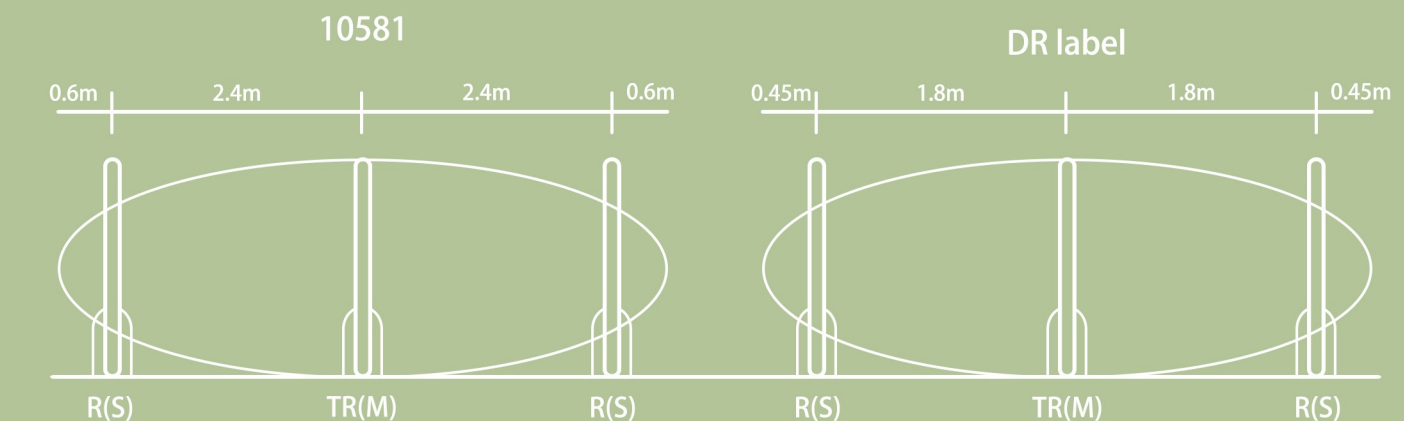
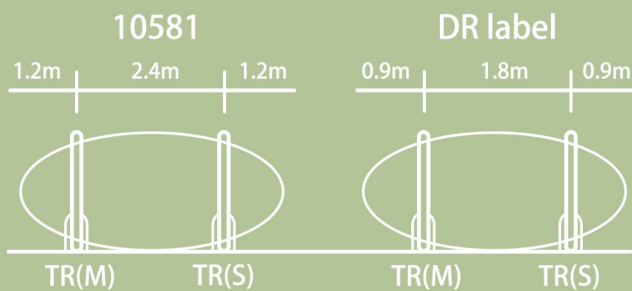
- Wide exit , light-weight acrylic antenna, thickness 20mm
- Master with built-in controller, can work stand-alone or connected to maximum two Slaves
- Both Master and Slave antennae can be set as TR, Tx or Rx
- With setting at Tx and Rx, will minimize backfield
- Flexible, stable and easy to tune via software providing stable operation
- Remote network tuning and CCTV connection optional



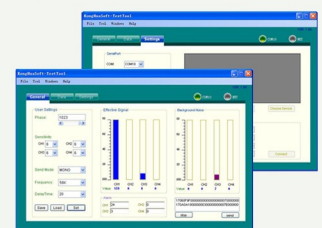
M6088D/M
M6088D/S

Size: 1530x505x125mm

Detection distance



Simplified installation with software tuning



The above indexes are measured under normal condition and may vary in different environment, tags type and their orientation