

# FaceStation 2

SMART FACE RECOGNITION TERMINAL



## FaceStation 2

Suprema FaceStation 2 is the most advanced face recognition terminal providing loads of the world's best features. Powered by Suprema's latest innovation in facial biometrics, FaceStation 2 offers unrivalled matching speed, accuracy and level of security. With Suprema's patented optic engineering, FaceStation 2 achieves up to 25,000 lx of operating illuminance which in turn, brings all-round confidence regardless of lighting conditions. Packed in an ergonomically-designed structure, FaceStation 2 provides exceptional performance and usability for diverse access control and time attendance sites, large or small.

# FaceStation 2 SMART FACE RECOGNITION TERMINAL

## Features



### Ultra Performance

- Matching Speed: 1:3,000 match/sec
- \* Group Matching: 1:5,000 match/sec
- User Capacity: Max 30,000 users (1:1), 3,000 users (1:N)



### Highest Operating Illuminance

- Operating illuminance from 0 lx to 25,000 lx
- Highest operating illuminance available
- Covers complete darkness to all indoor lighting conditions



### Enhanced Security

- Live face detection: IR-based image analysis to prevent spoofing by printed images and LCDs
- Enhanced security by Android 5.0 Lollipop
- High quality Image log



### Multi RFID Card Reading

- LF(125KHz), HF(13.56MHz) dual-band
- Reads all card types that HID multiCLASS supports (EM/HID Prox/MIFARE/iCLASS/DESFire/FeliCa/NFC)



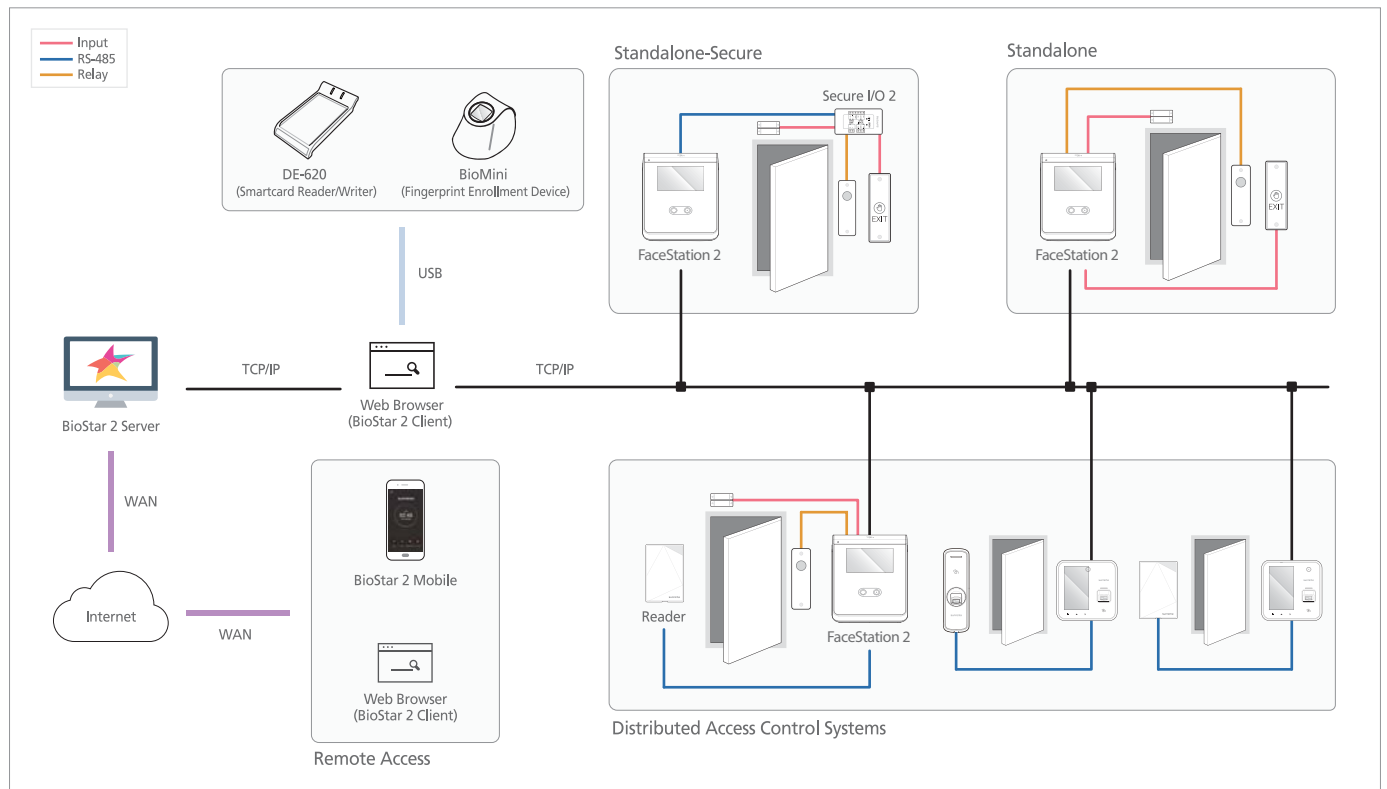
### Ergonomics & User Convenience

- Extended height range: 145cm – 210cm
- Tilt-type bracket for wheelchair persons & children
- Android 5.0 Lollipop based intuitive GUI
- Improved face enrolment procedure

## Specifications

| Category   | Features               | FS2-D  | FS2-AWB   |
|------------|------------------------|--|---|
| Credential | Biometric              | Face   |   |
|            | RF Options             | 125kHz: EM<br>13.56MHz: MIFARE, MIFARE Plus, DESFire/EV1, FeliCa, NFC  | (Includes all FS2-D's RF types)<br>125kHz:HID Prox<br>13.56MHz: iCLASS SE/SR<br>2.4GHz: BLE |
|            | RF read range*         | MIFARE/DESFire/iCLASS : 50 mm<br>EM/HID Prox/Felica: 30 mm, BLE: 50 mm |   |
| General    | CPU                    | 1.4 GHz Quad Core  |   |
|            | Memory                 | 8GB Flash + 1GB RAM  |   |
|            | LCD type               | 4" color TFT LCD   |   |
|            | LCD resolution         | 800 x 480 pixels   |   |
|            | IR LED                 | 140 ea   |   |
|            | Sound                  | 24 bit Voice DSP (echo cancellation)                                   |   |
|            | Operating temperature  | -20°C ~ 50°C   |   |
|            | Operating humidity     | 0% ~ 80%, non-condensing   |   |
|            | Dimensions (W x H x D) | 141 mm x 164 mm x 125 mm   |   |
|            | Weight                 | Device: 548g, Bracket: 74g (incl. washer and bolt)                     |   |
|            | Certificates           | CE, FCC, KC, RoHS, REACH, WEEE, BT SIG                                 |   |
|            | Power                  | DC 24V 2.5 A   |   |
|            | Face                   | Image dimension  | 720 x 480 pixels  |
| Capacity   | Live Face Detection    | Supported  |   |
|            | Max. User              | 30,000 (1:1), 3,000(1:N)   |   |
| Interfaces | Max. Log               | 5,000,000 (text), 50,000 (image)                                       |   |
|            | Wi-Fi                  | IEEE 802.11 b/g (FS2-AWB only)   |   |
|            | Ethernet               | Supported (10/100/1000 Mbps, auto MDI/MDI-X)                           |   |
|            | RS-485                 | 1ch Host or Slave (Selectable)   |   |
|            | Wiegand                | 1ch In and 1ch Out   |   |
|            | TTL input              | 1ch Input  |   |
|            | Relay                  | 1 Relay  |   |
|            | USB                    | USB 2.0 (Host)   |   |
|            | Tamper                 | Supported  |   |
|            | Video Phone            | SIP-based VoIP (Video + Voice)   |   |

## System Configurations



## Suprema Inc.

16F Parkview Tower, 248, Jeongjail-ro, Bundang-gu, Seongnam-si, Gyeonggi-do, 13554, Rep. of KOREA  
Tel: +82 31 783 4502 | Fax: +82 31 783 4503 | Inquiry: sales@supremainc.com

